

# Hitch Accessories



## Pin Coupler Lock

Security for your trailer, both on and off the hitch. Weather-resistant. 5-pin, pick-resistant tumbler lock. Solid die cast and brass plated with stainless steel holding pin, springs and tumblers. No holes to drill. Key will remove at every quarter turn. Will work on A-Frame couplers. With 2 keys.

Description	Part #
Coupler Lock, 1/Card	38958



## Universal Maximum Security Coupler Lock

A truly universal coupler lock—securely locks onto all tongue type couplers 1-7/8" – 2-5/16". Corrosion-resistant solid die-cast housing. High security pick-resistant lock cylinder with a 5/8" hardened steel shackle for maximum security.

Description	Part #
Maximum Security Coupler Lock, Keyed Differently	39594
Maximum Security Coupler Lock, Keyed Alike	31218



## Hitch Pins & Clips

Description	Part #
<b>CLASS II: 1/2" HITCH PULL PIN &amp; SPRING CLIP</b>	
1/2" Pull Pin & Clip, Carded	34521
Hitch Pin only, 1/2" x 2", Bulk	33253
Spring Clip only, Bulk	33792
<b>CLASS III: HITCH PULL PIN AND SPRING CLIP</b>	
Class III: 5/8" dia. x 3" long hitch pin with hitch pin clip.	
Pin and Clip	33790
Pull Pin Only, Also Replaces Reese #55010 and Eaz-Lift #4012, Bulk	33791
Spring Clip Only, Also Replaces Reese #55020 and Eaz-Lift #4017, Bulk	33792
<b>SPRING CLIP</b>	
Size: 3-1/4" L x 1-1/2" W; 1-1/4" hole dia.	
Spring Clip, 2/Pkg	34853



34521



34853

# Hitch Accessories



## Locking Receiver Pin

Chrome-plated pin with a V-5 rating. Easy to use, economical and secure protection against ball mount theft. **31441** can also be used as a rail pin on all Husky Fifth Wheel Hitches up to 26K.

Description	Part #
Locking Receiver Pin, 1/2" Dia. x 2-1/8" L for Class I/II	<b>34819</b>
Locking Receiver Pin, 1/2" Dia. x 3-1/8" L for Class I/II (will fit a 1-1/4" receiver or a Husky Base Rail Kit up to 26K)	<b>31441</b>
Locking Receiver Pin, 5/8" Dia. x 3" L for Class III/IV (will fit a 2-1/2" receiver)	<b>34818</b>



## Deadbolt Hitch Lock

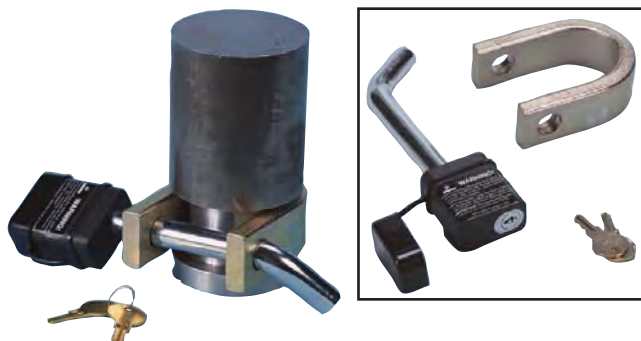
The chrome-plated Husky hitch locks add safety and security to your towing system. Husky hitch locks are built to last and will protect your investment for years. Our product features chrome-plated pins rated up to 14,000 lbs., textured rubber covers for a comfortable grip, dust caps to protect the lock from water and debris, and two reversible flat keys for your convenience. The deluxe model includes a sliding keyhole cover for extra assurance and additional styling for comfortable opening and closing.

Description	Part #
<b>Class I &amp; II (up to 3,500 lbs.), 1-3/4" Receiver</b>	
Hitch Lock, 1/2", Deluxe	<b>30330</b>
Hitch Lock, 1/2", Round	<b>30332</b>



## Fifth Wheel King Pin Lock

Protect your fifth wheel with the Husky King Pin Lock. Just slide the U-bracket into the grooved portion of the king pin and insert the lock pin.



Description	Part #
Fifth Wheel King Pin Lock	<b>38790</b>



# Hitch Accessories



## Fifth Wheel Lube Disc

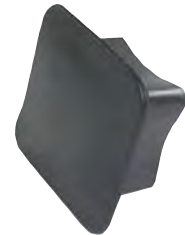
The easy way to prevent friction without grease! Just slip the Fifth Wheel Lube Disc onto the pin; fits all types of fifth wheel trailers.



Description	Part #
Fifth Wheel Lube Disc, Standard 8" Dia., 1/Pkg.	<b>33862</b>
Fifth Wheel Lube Disc, Heavy-Duty 10" Dia., 1/Pkg.	<b>34914</b>
Fifth Wheel Lube Disc, Heavy-Duty 12" Dia., 1/Pkg.	<b>32256</b>

## Black Press-In Receiver Cap

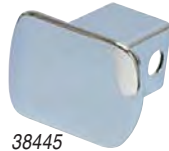
Durable plastic receiver cap protects and conceals receiver opening when not in use. Black. Carded.



Description	Part #
Press-In Receiver Cap, Black, 2"	<b>38443</b>
Press-In Receiver Cap, Black, 1-1/4"	<b>38444</b>

## 2" Pinned Receiver Cap

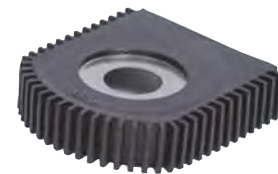
Durable plastic receiver cap protects and conceals receiver opening when not in use.



Description	Part #
<b>PINNED RECEIVER CAP</b>	
2" Pinned Cap, Black, CD/1	<b>38440</b>
2" Pinned Cap, Chromed, Bulk	<b>38445</b>
2" Pinned Cap, Black, Bulk	<b>38446</b>
<b>DECORATOR ENGRAVED PINNED RECEIVER CAP</b>	
2" Pinned Cap with Engraved Travel Trailer, Chromed, CD/1	<b>38441</b>

## Shin Protector

No more bruised shins. The Husky Shin Protector is made from soft rubber that fits securely over the tow bar tongue. Fits easily between tow ball and tow bar tongue.



Description	Part #
Shin Protector	<b>34869</b>

## Weight Distribution Hitch Protector Roller

**Tired of plowing asphalt and chipping concrete?** Protect your hitch, car and receiver from those jarring curbs and driveways, with the Husky solid steel roller. Installed on your weight distribution hitch properly, you will now roll over those curbs and reduce the shock and strain on your hitch. The Husky roller can be installed on new installations or existing setups. The roller comes complete with all needed Grade 5 hardware and spacers. This unit will fit all round bar and trunnion-style weight distribution hitches except Reese Brand products.

Description	Part #
Skid Rollers, Receiver Protector	<b>38792</b>



# Hitch Accessories



## 1/2" Torque Wrench

18 inch long (460mm) torque wrench has 45-tooth clockwise operation. Adjustable to 30-150 lb. range with +/- 4 percent accuracy for safe, secure hitch installation. Dual metric and English scales. Features a soft grip handle and comes in a blow-molded case.

Description	Part #
1/2" Torque Wrench	49429

