



Assembly, Installation, Operation and Maintenance Instructions

Kit, Base Rail Bracket Part # 31395

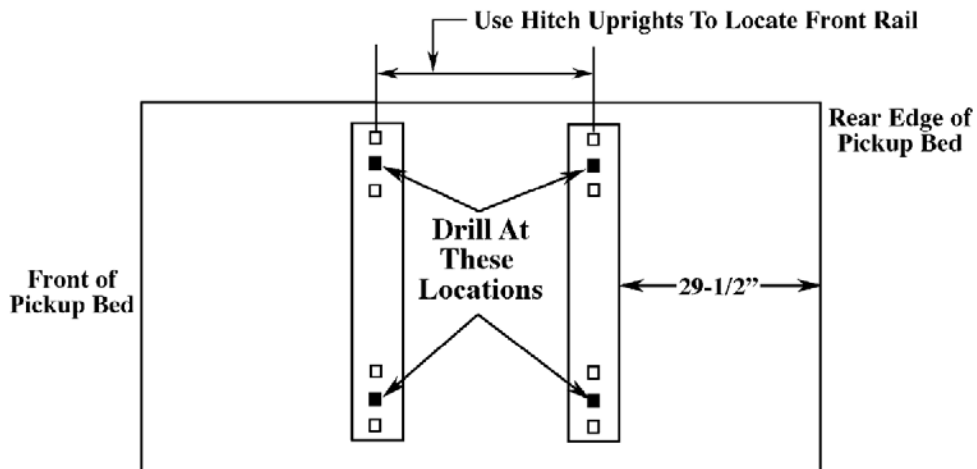
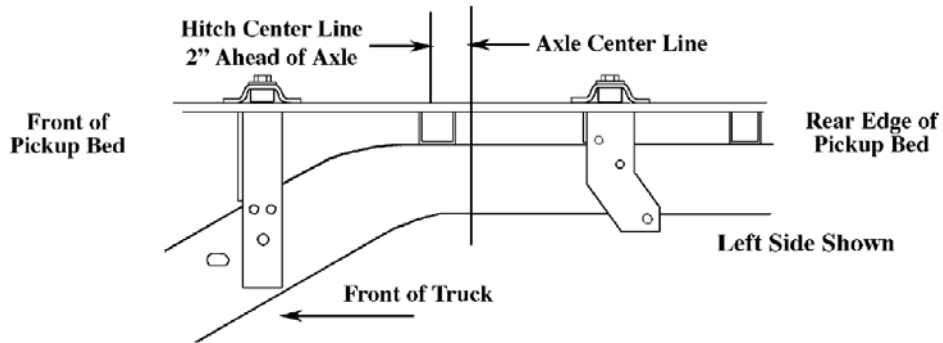
Dealer / Installer: Provide a copy of these Instructions to the end user of this product. These Instructions provide important operating and safety information for proper usage of this product. Demonstrate the proper use of the product with the end user. Have the end user demonstrate that they understand the proper use of the product.

End User: Read and follow all instructions included in this manual. Ask your Dealer / Installer for assistance if you do not understand the proper use of the product. Never remove any warning decals from the product.

APPLICATION: 2004 – 2009 Nissan Titan King Cab Pick-Ups (w/ 6-1/2' & 8' Bed)
 2008 – 2009 Nissan Titan Crew Cab Pick-Ups (w/ 7' Bed)

NOTE: This bracket kit is to be used with the 31323 Bed Rail Kit.

Complete Parts List			
Item No.	Part No.	Description	Quantity
1	ERD10755	Bracket, Front Passenger - Weldment	1
2	ERD10756	Bracket, Front Driver - Weldment	1
3	ERD10757	Bracket, Rear Passenger - Weldment	1
4	ERD10758	Bracket, Rear Driver - Weldment	1
5	ERD10744	Plate, 5/8 -11 Tapped - Weldment	2
6	ERD12188	Flat Washer, 5/8	8
7	ERD12187	Lock Washer, 5/8	6
8	ERD12184	Nut, Hex 5/8 -11	4
9	ERD10676	Bolt, Hex 5/8 -11 X 3-1/2"	4
10	ERD10031	3/4" Spacer Block	4
11	ERD10164	Bolt, Hex 1/2 -13 x 1-1/2"	2
12	ERD10040	Lock Washer, 1/2	4
13	ERD10752	Handle, Tab Nut - Weldment	2
14	ERD10656	U-Bolt, 1/2 -13	2
15	ERD10823	Flat Washer (HD), 1/2	4
16	ERD12189	Locknut Flange Serrated 1/2 -13,	4
17	ERD10137	Bolt, 1/2 -13 X 1-1/4"	2



NOTE:

Check cab clearance requirements before installing hitch

The distance from the cab to the hitch center line is approximately 36-1/2", (6-1/2 ft. bed)

Do not attempt to install on 5-1/2 ft. bed trucks.

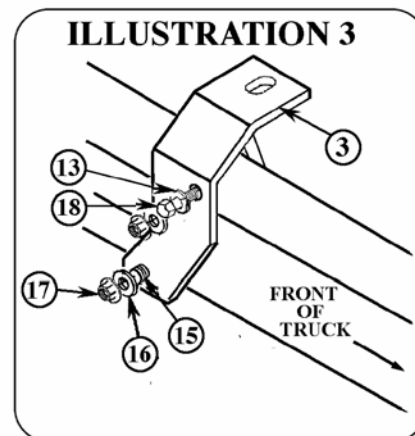
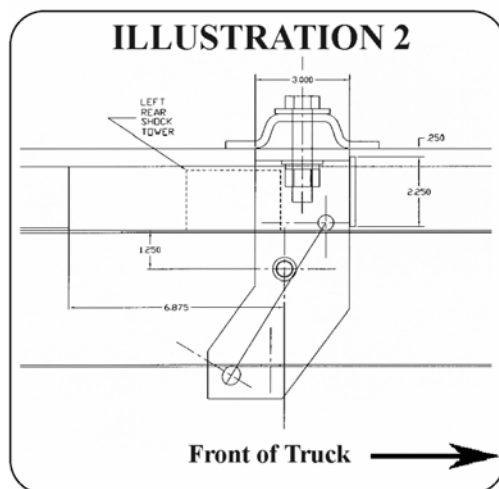
CAUTION:

Do not install mounting rails over plastic bed liners. Plastic bed liners must be cut out of the way. Rails may be installed on spray in liners.

NOTE:

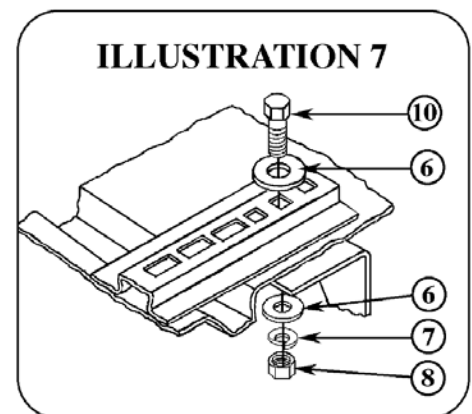
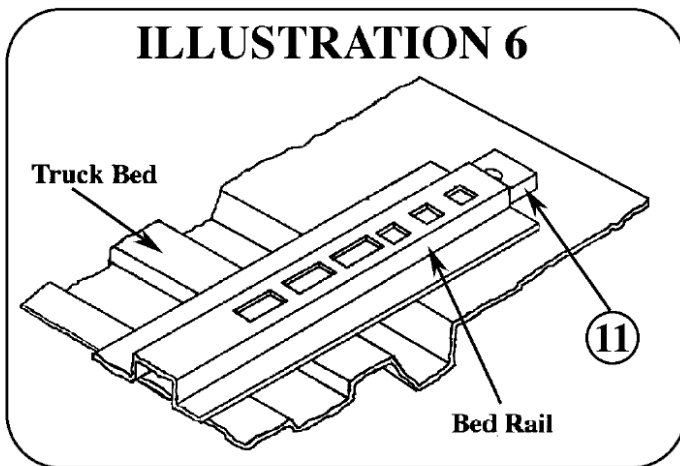
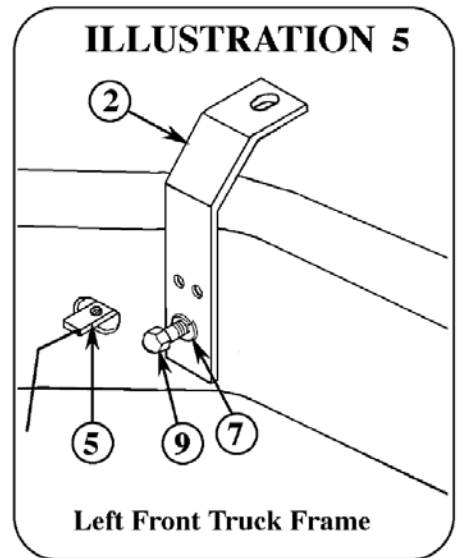
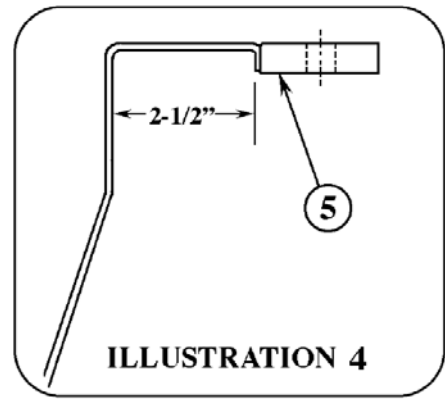
Consult spray liner installer for recommended curing time.

1. Remove the forward inner plastic filler panel from each rear wheel well. This panel is held in place with three fasteners. Save all parts for later re-installation. These panels cover the frame where the front frame brackets are to be installed.
2. Place the two bed rails across the truck bed between the wheel wells. Securely attach the 5th wheel cross member to uprights. Position the 5th wheel uprights between the bed rails so that the tabs in the base of each upright will fit into the slots in the bed rails. Secure the uprights in place with the rail hitch pins and hair pins supplied with the 5th wheel installation kit.
3. Position the bed rail assembly in truck bed as shown on the Illustration on sheet 2 of this instruction sheet. When hitch is correctly positioned in the bed and the bed rails are parallel, mark four attachment points on the truck bed using the 5/8" square holes indicated on the layout Illustration as guides. Check below the bed before drilling holes to see that all wiring, brake lines, or other obstructions are moved out of the way and will not be contacted by the drill. Move the hitch assembly out of the way and drill four 5/8" diameter holes down through the bed at the previously marked points.
4. Before you can install the right rear bracket onto the frame, a hole must be drilled in the side of the frame. See Illustration 2 for location of hole to be drilled. This hole will be used to locate the bracket on the frame.
5. Position the right rear bracket #3 against the outer surface of the right side truck frame with the upper formed leg positioned over the top of the frame. Align threaded hole in bracket #3 with drilled hole in truck frame and carefully thread bolt #18 into the tapped hole in bracket and out into hole in side of truck frame. See Illustration 3. Attach bracket to frame with 1/2" U-Bolt #15 as shown on Illustration 3. Leave U-Bolts loose.
- 5a. Repeat installation procedure with left rear bracket #4 on left side frame. Threaded hole in bracket #4 will be positioned over the existing hole in frame. Align threaded hole in bracket #4 with the existing hole in truck frame and carefully thread bolt #18 into the tapped hole in bracket #4 and out into hole in side of truck frame. The upper hole in each bracket must be aligned with previously drilled 5/8" hole in truck bed.

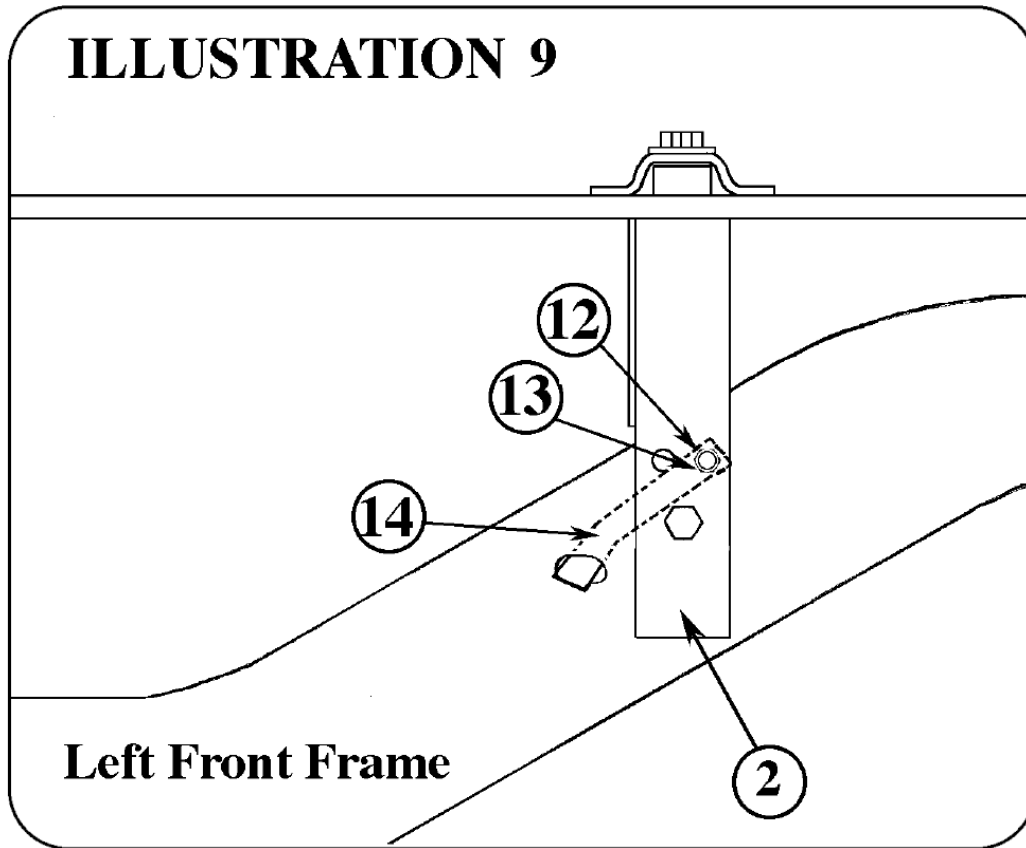


NOTE: After the U-Bolts are installed and torqued to specification, the lower leg of the U-bolts may need to be trimmed off to clear leaf springs or suspension parts.

6. Form the wire handle on the tapped plate assembly #5 as shown on Illustration 4. This form will allow the tapped plate to be positioned inside frame over attachment hole.
7. Position the left and right front brackets #1 and #2 against the sides of the left and right truck frame and align with the large hole in frame. This hole will be just above an access slot in frame.
8. Position the tapped plate #5 into left truck frame through the access hole and align over the existing hole in frame. Bolt left bracket #2 to frame with 5/8" fasteners, as shown on Illustration 5. Do not tighten bolt at this time. Repeat procedure on right side frame using right bracket #1.
9. Reposition the bed rails in the bed so that the 2nd square hole in the end of each rail is lined up over the drilled holes. Place a 3/4" thick spacer block #11 under ends of each bed rail. In line with the drilled holes as shown on Illustration 6.
10. Bolt bed rails to truck bed and under bed frame brackets with 5/8" fasteners shown on Illustration 7.



11. Go back to the front left and right brackets, partially mounted to the truck frame. Near the center of each bracket there are two holes. There should be a hole in the truck frame that will be lined up with the rear hole on each bracket. Enlarge this hole in the frame to accept a 1/2" bolt.
12. Insert a 1/2" tab nut #14 into frame through the access slot in frame and align with the previously drilled hole. Bolt bracket to frame with 1/2" bolt #12 and lockwasher #13 as shown on Illustration 9.



13. Tighten all 1/2" bolts to 75 ft. – lbs. torque. Failure to tighten bolts as described may result in fastener loss or failure.
14. Re-install the plastic wheel well filler panels removed in step 1 using the original fasteners.